



24 Lumsden Avenue North Kellyville NSW

4 3 2

Experience the best of North Kellyville living in this stunning double-storey family home at 24 Lumsden Avenue. Just 3 years young and with a blend of modern luxury and unbeatable convenience, this property offers everything a family could desire.

Key Features:

4 Spacious Bedrooms: Designed for comfort, providing ample space for the whole family, one located on the entry level with an adjoining ensuite.

3 Modern Bathrooms: Elegant fixtures and finishes for a luxurious touch. Plus a guest powder room.

2-Car Garage: Plenty of room for vehicles and additional storage.



Alexandra Meadth
02 8834 3200



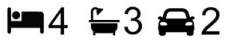
Angela McKinnon
02 8834 3200



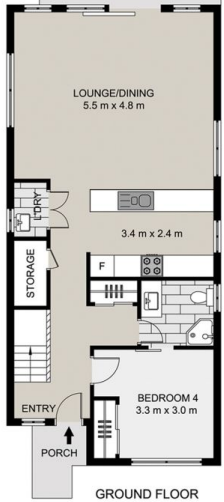
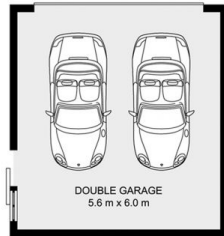
Alexandra Meadth
02 8834 3200



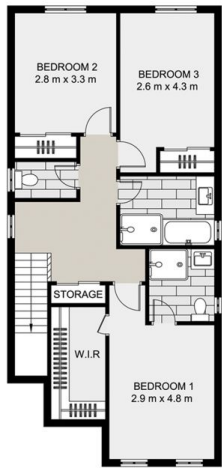
24 Lumsden Avenue
North Kellyville, NSW 2155



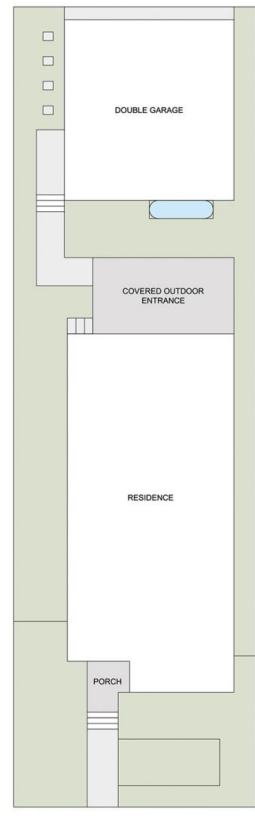
All information contained in this document is from sources we believe to be accurate, however we cannot guarantee its accuracy. Interested persons should make and rely on their own enquiries in relation to measurements, dimensions, layout, furniture and description.



GROUND FLOOR



FIRST FLOOR



SITE PLAN (NOT TO SCALE)

