



6 Brayden Way Kellyville NSW

4 🏠 2 🚗 2 🚗

Set on the high side of a quiet cul-de-sac street, 6 Brayden Way, Kellyville is the perfect family home.

Featuring versatile living spaces such as a media room, formal and informal living spaces downstairs and a generous sized upstairs living room, the home is tailored to accommodate the needs of growing families.

4 large bedrooms upstairs, the master suite with its own private balcony looking out to the bush.

The location is second to none, positioning you within a short walk to Bernie Mullane Sports Complex, quality local schools, cafes, easy access to main arterial roads and more!

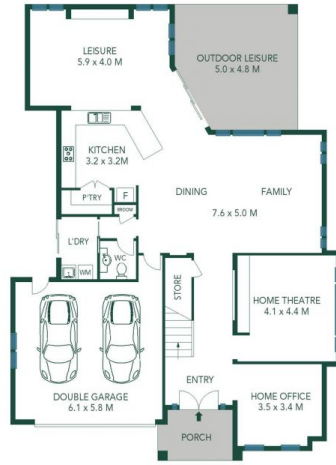


Alexandra Meadth
02 8834 3200



Laura Nasr
02 8834 3200

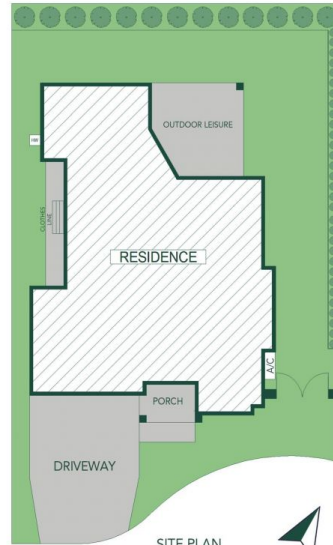
6 Brayden Way
Kellyville



GROUND FLOOR



FIRST FLOOR



SITE PLAN

The site plan and floor plan are not to scale; measurements are indicative and in metres. Bushes and trees are placed for illustration purposes. Plans should not be relied on. Interested parties should make and rely on their own enquiries. All other information provided has been collected from reliable sources but cannot be guaranteed for accuracy.