



10 Millcroft Way BEAUMONT HILLS NSW

4 2 2

Positioned to impress in an ultra convenient pocket of Beaumont Hills bordering Kellyville, and designed with careful consideration for growing and established families alike. Welcome to 10 Millcroft Way, a truly fabulous family home.

Land Size : 451 sqm

Freshly updated throughout with an undeniable warmth, the home provides two spacious living areas, both adjoining a gourmet kitchen. The kitchen offers ample bench space, gas cooking appliances, loads of cupboard space and a built-in pantry. The living, kitchen and family meals zones are perfectly positioned to flow easily to a covered alfresco entertaining area and level backyard, sure to be a big hit with the kids and family pets.

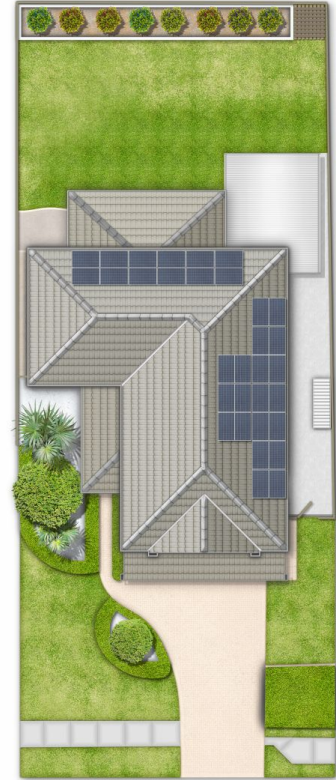
Upstairs consists of 4 queen-sized bedrooms, headed by the master suite, which is the perfect break away space for



GROUND FLOOR



FLOOR 1



10 MILLCROFT WAY, BEAUMONT HILLS 4 Bed, 2 Bath, 2 Car Land area (approx.) 451sqm

THE PLAN IS SHOWN FOR GENERAL GUIDANCE ONLY. ALL AREAS, MEASUREMENTS AND DISTANCES ARE APPROXIMATE AND NOT TO SCALE. OPES RE, ITS SERVICE PROVIDERS AND VENDOR WILL ACCEPT NO RESPONSIBILITY FOR ITS ACCURACY. INTERESTED PARTIES ARE ADVISED TO MAKE THEIR OWN INDEPENDENT ENQUIRES.