

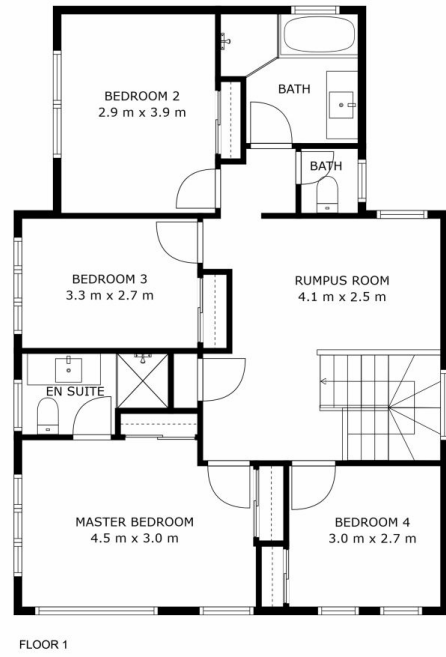


83 Phoenix Avenue BEAUMONT HILLS NSW

4 3 2

This much loved, AV Jennings build has been a cherished family home for its current owners. It features a classic double storey floor plan and offers the perfect blend of indoor living and outdoor entertaining. Situated in a peaceful, leafy cul-de-sac, the home is walking distance to Kellyville Metro Station, close to quality schools and daycares, shopping centres, several family parks and sporting fields. The spacious design is coupled with a neutral colour palette and plenty of natural light throughout. The level, oversized yard space captures the northern sun, offers scope to add value and benefits from a drive through garage. Many facets of the property have been recently updated, giving it an undeniably modern feel across both levels.

Special features include:



83 PHOENIX AVENUE, BEAUMONT HILLS 5 Bed, 3 Bath, 2 Car Land area (approx.) 351sqm

THE PLAN IS SHOWN FOR GENERAL GUIDANCE ONLY. ALL AREAS, MEASUREMENTS AND DISTANCES ARE APPROXIMATE AND NOT TO SCALE. OPES RE, ITS SERVICE PROVIDERS AND VENDOR WILL ACCEPT NO RESPONSIBILITY FOR ITS ACCURACY. INTERESTED PARTIES ARE ADVISED TO MAKE THEIR OWN INDEPENDENT ENQUIRES.