



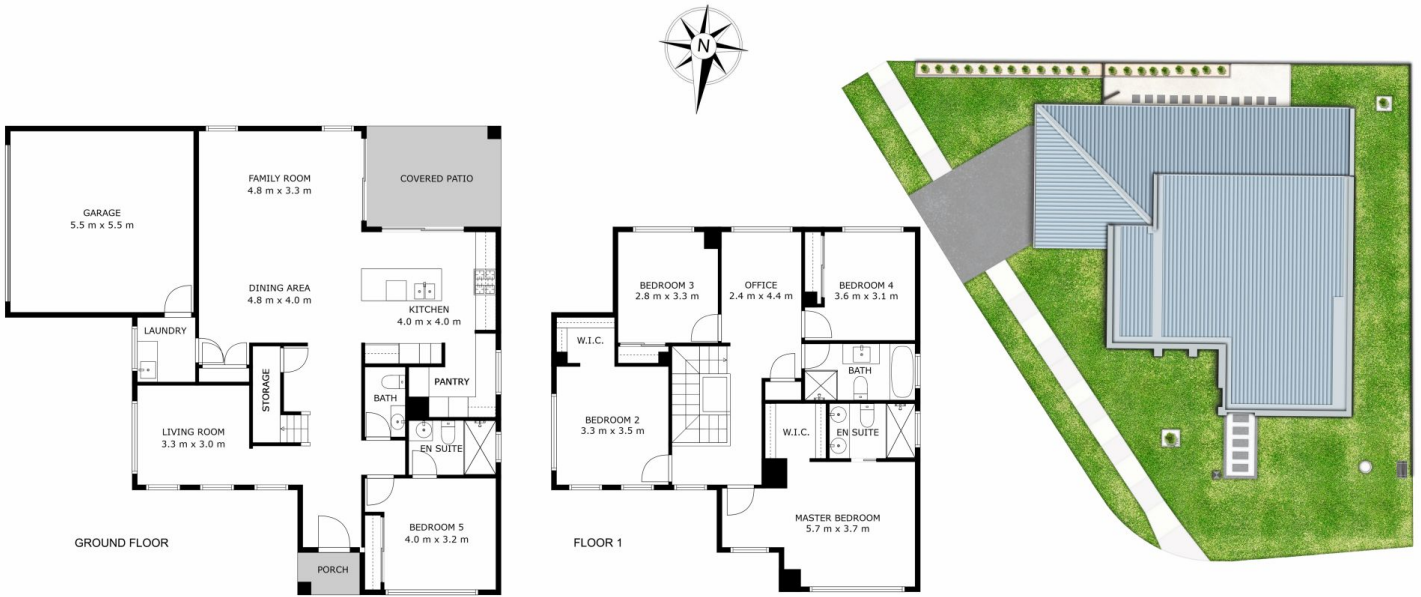
31 Galileo Street BOX HILL NSW

5 3 2

* Inspection directions: travel North on Nelson Road, then turn Left into Mason Road, then take the second Right into Galileo Street*

Thoughtfully designed to suit the needs of growing, mature and multi-generational families, this home is sure to impress even the most discerning individual. A commanding, north facing street presence, soaring ceiling heights, contemporary finishes and copious natural light, add to its undeniable allure.

Offering several well-proportioned living and entertaining areas, downstairs accommodation with a full bathroom, a covered alfresco entertaining area and a deluxe chefs kitchen, plus much more. This is truly a special home, perfectly suited to those who value quality and timeless elegance on a grand scale.



**31 GALILEO STREET,
BOX HILL**

5 Bed, 3.5 Bath, 2 Car + Media Land area (approx.) 424sqm

THE PLAN IS SHOWN FOR GENERAL GUIDANCE ONLY. ALL AREAS, MEASUREMENTS AND DISTANCES ARE APPROXIMATE AND NOT TO SCALE. OPES RE, ITS SERVICE PROVIDERS AND VENDOR WILL ACCEPT NO RESPONSIBILITY FOR ITS ACCURACY. INTERESTED PARTIES ARE ADVISED TO MAKE THEIR OWN INDEPENDENT ENQUIRES.