

25 Buller Circuit BEAUMONT HILLS NSW

4 2 2

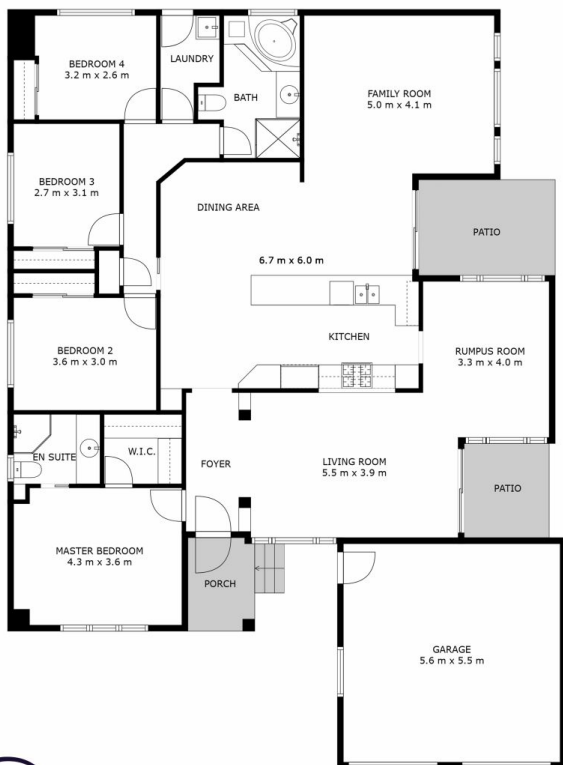
Welcome:

Located for absolute convenience, mere footsteps to Beaumont Village and Beaumont Public School, this handsome single level home sits proudly on a 523sqm parcel. Enjoying incredible proximity to the best of a blue ribbon suburb, this versatile home will not only suit young families with an eye to capitalise on its obvious potential, but also savvy investors and downsizers seeking a relaxed, low maintenance lifestyle. Zoned for Beaumont Hills Public and Kellyville High, this a second-to-none address for easy living.

Land Size : 523 sqm

Come on in:

Offering a tidy blank canvas, and ready for the new owners to make their mark, the home offers an oversized living



Opes RE
YOUR MOVE

25 BULLER CIRCUIT, BEAUMONT HILLS 4 Bed, 2 Bath, 2 Car Land area (approx.) 523sqm

THE PLAN IS SHOWN FOR GENERAL GUIDANCE ONLY. ALL AREAS, MEASUREMENTS AND DISTANCES ARE APPROXIMATE AND NOT TO SCALE. OPES RE, ITS SERVICE PROVIDERS AND VENDOR WILL ACCEPT NO RESPONSIBILITY FOR ITS ACCURACY. INTERESTED PARTIES ARE ADVISED TO MAKE THEIR OWN INDEPENDENT ENQUIRES.