



**25 Beaumont Drive BEAUMONT HILLS NSW**

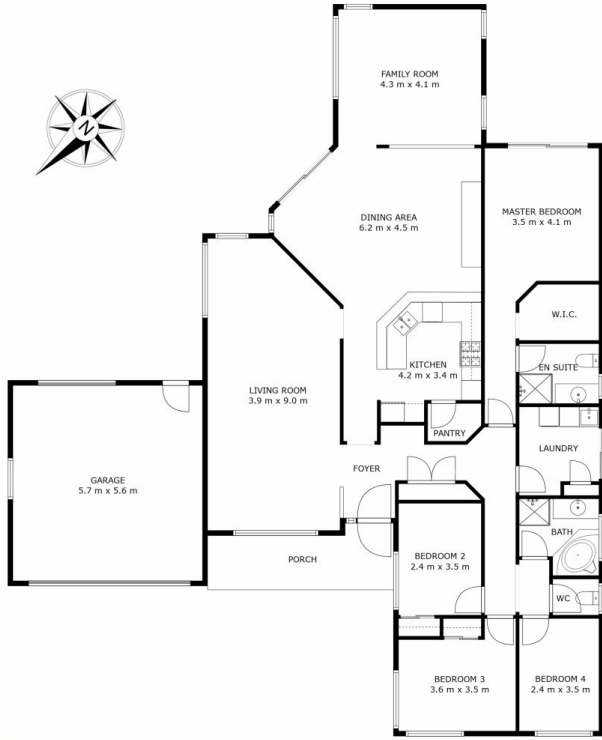
4 2 2

Welcome:

Positioned in an ultra-convenient street in Beaumont Hills this dashing single level home offers the very best in living and entertaining. Boasting an abundance of natural light, spacious interiors, and a gracious flow from room to room. The new owners of 25 Beaumont Drive will find themselves just footsteps from the local bus stop, local parks, Beaumont Village and just minutes drive to Rouse Hill Town Centre and Metro. With strong crossover appeal for families, downsizers, and investors alike, the home is zoned for Beaumont Hills Public and Kellyville High, and benefits from several other highly regarded private schooling and childcare options within easy reach.

**Land Size : 631 sqm**

Come on in:



25 BEAUMONT DRIVE, BEAUMONT HILLS 4 Bed, 2 Bath, 2 Car Land area (approx.) 631sqm

THE PLAN IS SHOWN FOR GENERAL GUIDANCE ONLY. ALL AREAS, MEASUREMENTS AND DISTANCES ARE APPROXIMATE AND NOT TO SCALE. OPES RE, ITS SERVICE PROVIDERS AND VENDOR WILL ACCEPT NO RESPONSIBILITY FOR ITS ACCURACY. INTERESTED PARTIES ARE ADVISED TO MAKE THEIR OWN INDEPENDENT ENQUIRES.