



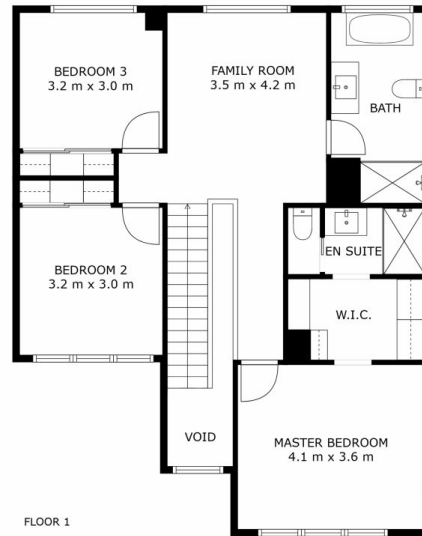
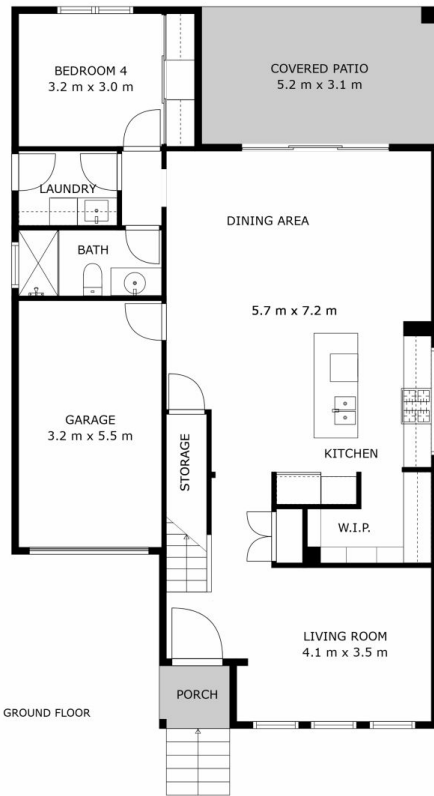
19 Galileo Street BOX HILL NSW

4 3 1

Glamour abounds from the moment you open the door to this truly exceptional brand new home. Architecturally designed and custom built, timeless finishes throughout are made all the more impressive by the warm embrace of natural light in every room. Designed to grow with your family's needs, and flaunting a spacious double storey floor plan, the home offers several versatile living areas, downstairs accommodation for guests or family members, a glamorous chef's kitchen and a seamless flow to the low maintenance backyard.

Land Size : 317.4 sqm

Set in a whisper-quiet pocket of Box Hill, with views to the Blue Mountains, this is a truly rare opportunity to experience luxury and lifestyle in a leading class. Convenience abounds, with the home just a 10-minute drive to Rouse Hill Town Centre and Metro, and a comfortable walk to the future Box Hill City Centre.



19 GALILEO STREET, BOX HILL

4 Bed, 3 Bath, 1 Car

Land area (approx.) 317sqm

THE PLAN IS SHOWN FOR GENERAL GUIDANCE ONLY. ALL AREAS, MEASUREMENTS AND DISTANCES ARE APPROXIMATE AND NOT TO SCALE. OPES RE, ITS SERVICE PROVIDERS AND VENDOR WILL ACCEPT NO RESPONSIBILITY FOR ITS ACCURACY. INTERESTED PARTIES ARE ADVISED TO MAKE THEIR OWN INDEPENDENT ENQUIRES.