

29 Galileo Street BOX HILL NSW

4 3 1

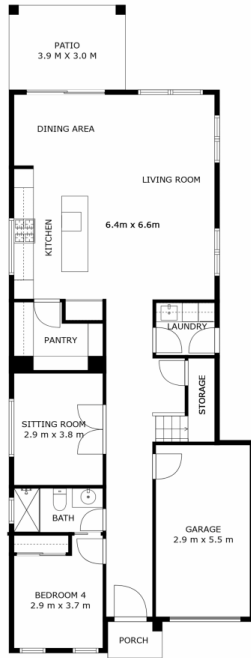
The minute you open the door to this glamorous, newly built home, you cannot help but fall in love with the timeless style and thoughtfully crafted floorplan. Architecturally designed to suit the needs of growing, mature and multi-generational families, this home is sure to impress even the most discerning individual. Soaring ceiling heights, glamorous finishes and copious natural light, add to its undeniable allure.

Land Size : 363.5 sqm

Offering several well-proportioned living and entertaining areas, downstairs accommodation with a full bathroom, a large backyard, covered alfresco dining and a deluxe chefs kitchen, plus much more. This is truly a special home, perfect suited to those who value quality and timeless elegance.

Additional features include:

<https://www.opesre.com.au>



29 GALILEO STREET, BOX HILL

4 Bed + Media, 3 Bath, 1 Car

Land area (approx.) 364sqm

THE PLAN IS SHOWN FOR GENERAL GUIDANCE ONLY. ALL AREAS, MEASUREMENTS AND DISTANCES ARE APPROXIMATE AND NOT TO SCALE. OPES RE, ITS SERVICE PROVIDERS AND VENDOR WILL ACCEPT NO RESPONSIBILITY FOR ITS ACCURACY. INTERESTED PARTIES ARE ADVISED TO MAKE THEIR OWN INDEPENDENT ENQUIRES.