

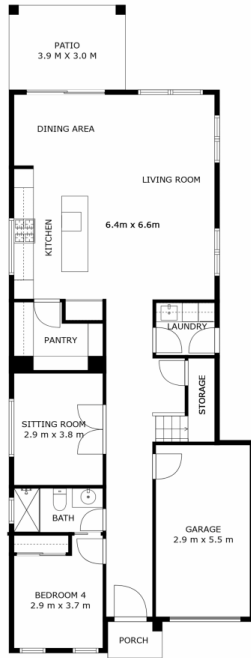
27 Galileo Street BOX HILL NSW

4 3 1

Sleek, functional and contemporary, this brand new designer residence is the custom build you've been dreaming of. Timeless finishes throughout are made all the more impressive by the warm embrace of natural light in every room. Designed to grow with your family's needs, flaunting a spacious double storey floor plan of grand proportions, the home offers several versatile living areas, downstairs accommodation for guests or family members, a glamorous chef's kitchen and a seamless flow to the large, year-round entertainers backyard.

Land Size : 357.4 sqm

North facing, set in a whisper-quiet pocket of Box Hill, with views to the mountains, this is a truly rare opportunity to experience luxury and lifestyle in a leading class. Convenience abounds, with the home just a 10-minute drive to Rouse Hill Town Centre and Metro, and a comfortable walk to the future Box Hill City Centre.



27 GALILEO STREET, BOX HILL 4 Bed + Media, 3 Bath, 1 Car Land area (approx.) 357sqm

THE PLAN IS SHOWN FOR GENERAL GUIDANCE ONLY. ALL AREAS, MEASUREMENTS AND DISTANCES ARE APPROXIMATE AND NOT TO SCALE. OPES RE, ITS SERVICE PROVIDERS AND VENDOR WILL ACCEPT NO RESPONSIBILITY FOR ITS ACCURACY. INTERESTED PARTIES ARE ADVISED TO MAKE THEIR OWN INDEPENDENT ENQUIRES.