



70 Brampton Drive BEAUMONT HILLS NSW

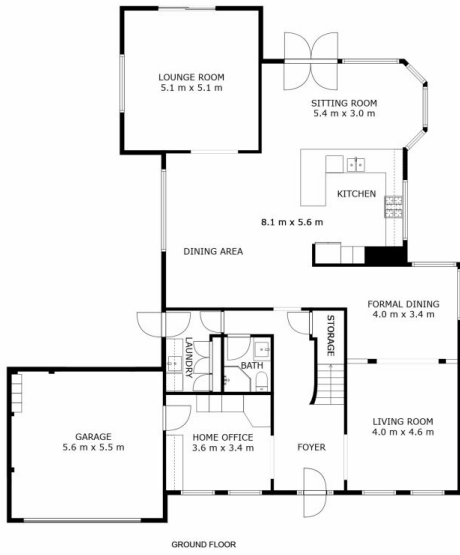
4 3 2

A truly special home, bathed in glorious natural light and the warmth of year-round sunshine, 70 Brampton Drive is ready to welcome its new owners.

Land Size : 771 sqm

Come in:

Oozing class at every turn, this extensively renovated, contemporary Clarendon residence features a vast floorplan suitable for growing and mature families alike, and enjoys enviable proximity to every amenity your family might require. Positioned just 250m to the local park, 900m to Beaumont Village and just a few minutes drive to Rouse Hill Town Centre and Metro. With strong crossover appeal for young families and investors alike, the home is zoned for Beaumont Hills Public and Rouse Hill High, and assures your family a life of central convenience.



70 BRAMPTON DRIVE,
BEAUMONT HILLS

4 Bed + Study, 3 Bath, 2 Car

Land area (approx.) 770.9 sqm
Internal area (approx.) 379 sqm



THE PLAN IS SHOWN FOR GENERAL GUIDANCE ONLY. ALL AREAS, MEASUREMENTS AND DISTANCES ARE APPROXIMATE AND NOT TO SCALE. OPES RE, ITS SERVICE PROVIDERS AND VENDOR WILL ACCEPT NO RESPONSIBILITY FOR ITS ACCURACY. INTERESTED PARTIES ARE ADVISED TO MAKE THEIR OWN INDEPENDENT ENQUIRIES.