



17 Yusen Street, Grantham Farm RIVERSTONE NSW

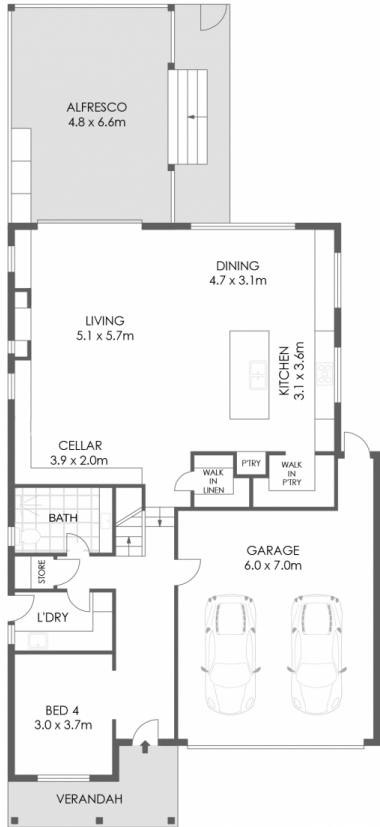
4 3 2

Sold by Gregory Mainstone and Alexandra Meadth

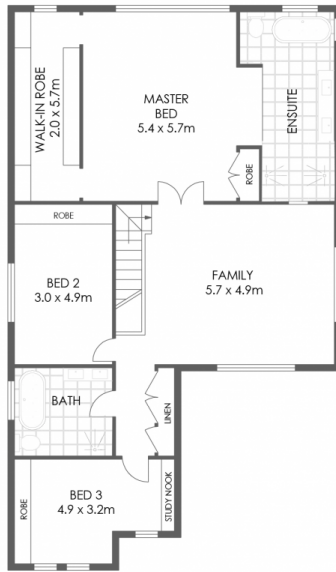
Land Size : 474 sqm

This magnificent 40 square master-built family home exudes total luxury in every respect. Setting the benchmark for family living and entertaining, it is undoubtedly Grantham Farms most exclusive home. Resplendent in its Hamptons inspired glory, blending classic family comfort with state-of-the-art contemporary style, this masterpiece ticks all the boxes of your forever home.

Timeless finishes of the highest quality are made all the more impressive by the warm embrace of natural light in every room. Designed to grow with your familys needs, flaunting a double storey floor plan of grand proportions, the home offers versatile living areas, a glamorous chefs kitchen and a seamless flow to the year-round entertainers backyard, replete with a glistening inground swimming pool



GROUND FLOOR



FIRST FLOOR



SITE PLAN



Scale in metres. Indicative only. Dimensions are approximate. All information contained herein is gathered from sources we believe to be reliable. However we cannot guarantee its accuracy and interested parties should rely on their own enquiries. Floor plan created by Onebox Media.

17 Yusen Street, Grantham Farm

