

12 Pyramid Way Kellyville NSW

5 3 2

Located in Kellyville, Vanguard explores a balance between individuality and unity bringing brand new, two-storey, freestanding residences to the community, completing in early 2024. Each home includes five bedrooms and three bathrooms and has been designed to make a striking statement on its own, while sharing a visual language with its neighbours. The architecture plays with different forms to create a choice of individual elevations.

Dwelling Type E3 - A Timeless, Turn Key, Designer Residence

Your home will be finished to the highest level in a refined palette of neutrals, creating a canvas on which to express your personality.

Comprising of luxury specifications and inclusions, a

Price : Contact Agent



Alexandra Meadth
02 8834 3200

Type E

5 Bedrooms

3 Bathrooms

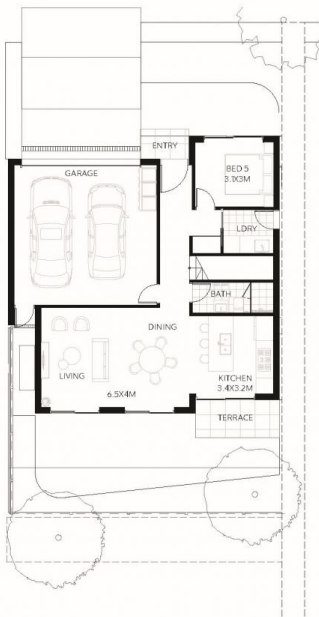
2 Car Bays

Shown
Type E1 Lot 13

Similar
Type E2 Lots 4, 11
Type E3 Lot 12

Lot Sizes
240m²

Disclaimer: Please note that all plans were produced prior to construction as at August 2023. The information is believed to be correct, but is not guaranteed. Changes may be made during construction and dimensions, areas, fittings, finishes and specification are subject to change without notice in accordance with the provisions of the Contract of Sale. Prospective purchasers must rely on their own enquiries. Furniture is indicative and shown for layout purposes only. All graphics including title layout and balustrades, and the like are indicative only.



Ground Floor



First Floor

0 0.5 1 2m



Facade E1



Facade E2



Facade E3